

PARASOLEIL CASE STUDY

Bison Ridge Recreation Center

Commerce City, Colorado

Completed May 2018



PRODUCT DETAILS

APPLICATION

awnings, cladding, screen, railing

MATERIAL

1/8" and 1/4" aluminum

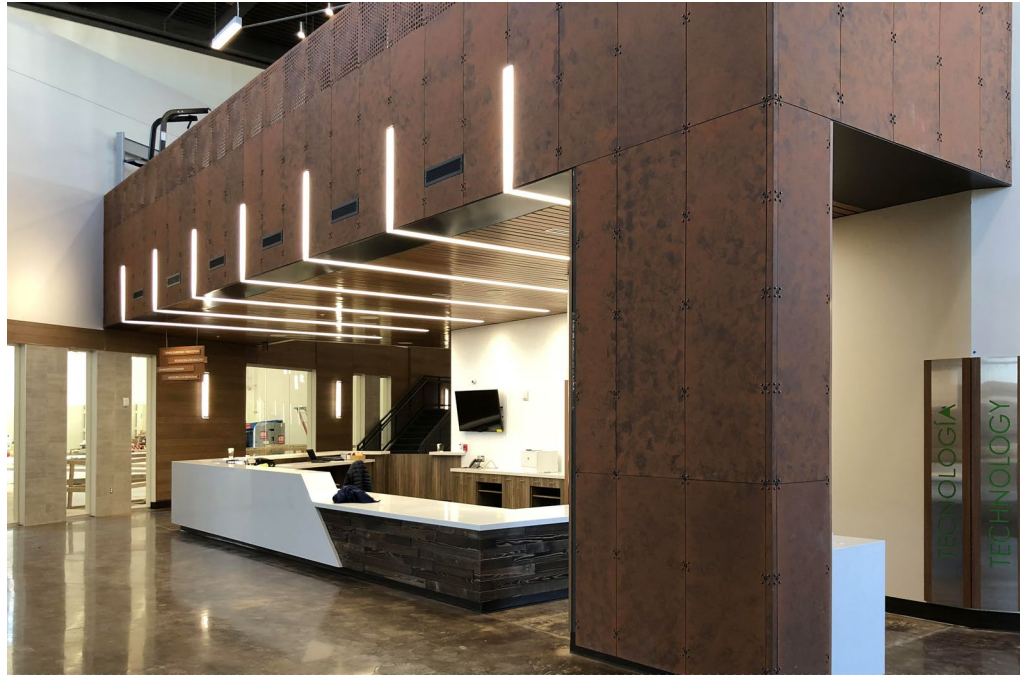
PATTERN

Lemon Drop©, custom, solid

FINISH

COR-11™

parasoleil.com
303.589.4524
Email us at hello@parasoleil.com



PROJECT DETAILS

SITUATION

Bison Ridge Recreation Center was designed for a new community to provide a wide variety of health, fitness, and creative programs. The aesthetic called for a rusted steel finish. Actual rusted steel would require additional support, would result in a weight challenge, and risk staining the surrounding architecture.

SOLUTION

Parasoleil recommended aluminum panels with our COR-11 finish that allowed for varied patterns and ease of installation throughout the interior and exterior of the building. This gave the facility a spacious, modern feel.

Parasoleil

From the Client

OWNER

Commerce City

The high-end, rustic aesthetic without the undesired effect of actual rust and staining was important to the City.

SPECIFIER

Sink Combs Dethlefs Architects

Parasoleil worked with the architect to provide design support in the schematic design phase of the project. This ensured that the panel thickness, panel system, and 90-degree corner detail were specified correctly.

The Parasoleil COR-11 finish was used in multiple applications to satisfy the design intent and keep the project's design straightforward.

CONTRACTORS:

Pinkard Construction

Parasoleil worked with the installation crew to problem-solve any issues with site conditions. The field measurements were determined after the duct work and lighting to ensure they were accurate. The wall substrate was not flat and required shims behind the brackets to ensure panel alignment and aesthetic were maintained. To meet the installation schedule, the order was batched to provide a smooth delivery.

Parasoleil

EXTERIOR AWNINGS

- **Panel:** 1/8" solid aluminum panels, 58 total panels for awnings (23 unique)
- **Hardware:** direct mount with PDS screws to light gauge welded tube steel frames
- **Engineering:** wide span range allowed

EXTERIOR SCREENS

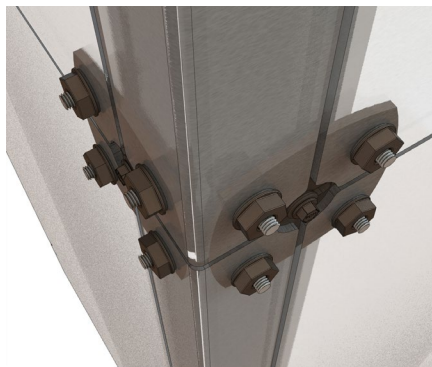
- **Panel:** 1/4" aluminum with Lemon Drop pattern
- **Hardware:** direct mount PDH screws at 8" on-center tube steel posts

INTERIOR RAILING

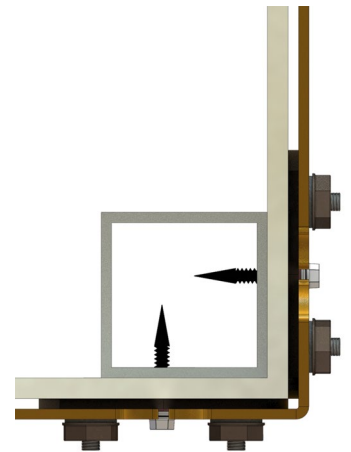
- **Panel:** 1/4" aluminum with custom pattern
- **Hardware:** extension of wall cladding system required continuation of PFL system hardware
- **Engineering:** engineered for deflection to meet building code

INTERIOR WALL CLADDING

- **Panel:** 1/8" solid aluminum panels, 47 total interior panels (31 unique)
- **Hardware:** PFL system hardware every 24"



Interior cladding corner condition



All Parasoleil finishes are warrantied for 10 years and all projects are backed by the Parasoleil brand. Patterns and hardware are protected under copyright and patent law, respectively.