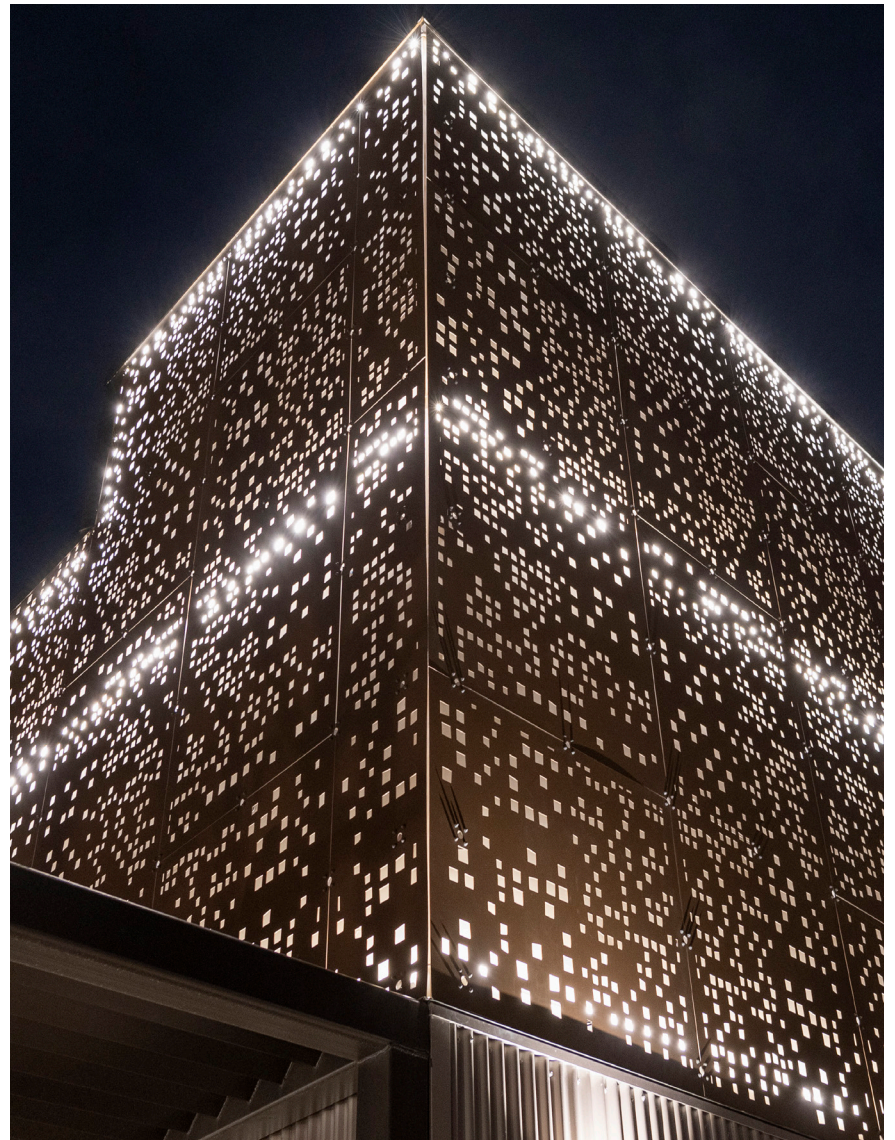
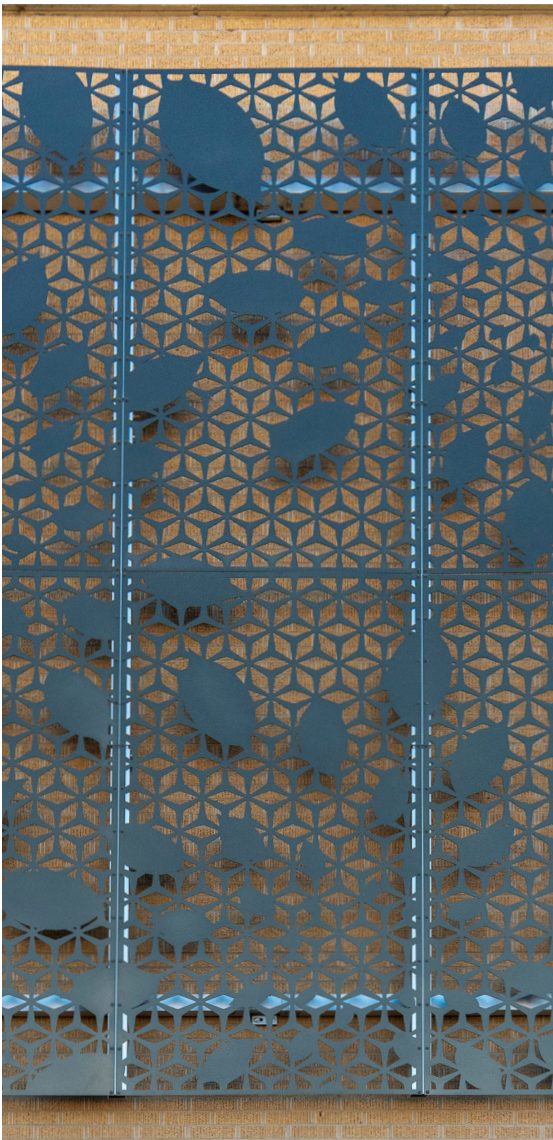


Parasoleil

MESH Design Guide






About Parasoleil

Precision cut, hand-finished artisan architectural panels

Parasoleil designs and manufactures an exceptional line of laser-cut architectural metal panels with unique patterns that offer a profoundly artistic aesthetic to any space. Engineered to withstand the elements and manufactured in the United States, these decorative panels provide a functional and durable design that is warranted to last. Parasoleil's project guidance, proprietary hardware and installation system, production dependability, and beautiful powder coats ensure your project's vision comes to life in a memorable and lasting way.

Contact Us

6510 W. 91st Avenue, Suite 100
Westminster, CO 80031
Phone | (303) 589-4524
Email | hello@parasoleil.com
parasoleil.com

 /ParasoleilUSA
 /Parasoleil
 /ParasoleilUSA

Parasoleil

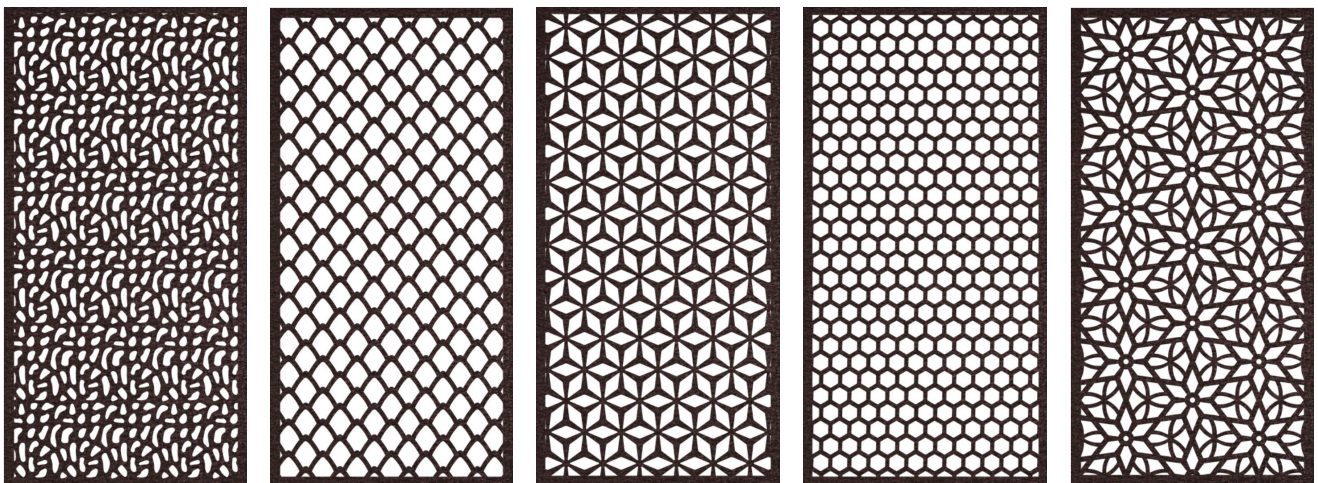
All Parasoleil patterns are protected under copyright law. Copying, modifying, or any unauthorized use of these patterns is strictly prohibited.

What is MESH?



MESH (Modular Engineered Shadowgraphing) is a brand-new innovation in pattern development that allows all users to take complete advantage of Parasoleil's engineered standards while simultaneously creating unique, fully custom arrays of aluminum panels as a canvas for their art, design, client's brand, or just versatile creativity. This proprietary approach to pattern helps provide solutions for a projects at a stage when engineering is not often considered.

MESH patterns are designed as very modular and composed of smaller elements in order to create a "lace" or "field" pattern in an array of panels. This field pattern then becomes the canvas on which you, the artist, can create with endless possibilities. The MESH pattern provides the increased structural stability and opacity to apply whatever you may imagine to that canvas, making infinite new possibilities.



MESH Advantages

NOT LIMITED TO JUST HOLES

Most large-scale array projects that exist have been limited to using holes of varying sizes to achieve a perforated imaging effect. We have broken down that barrier and, due to our depth of knowledge in panel manufacturing, pattern engineering and expertise, allow the use of any shape you can image.

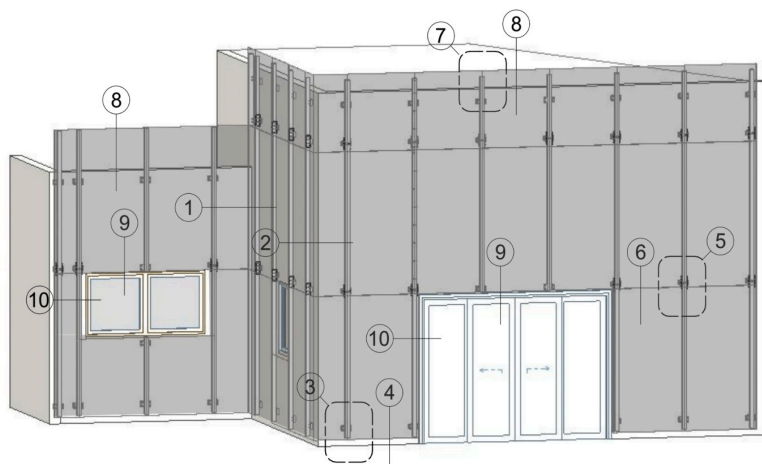


CUSTOM MADE EASY

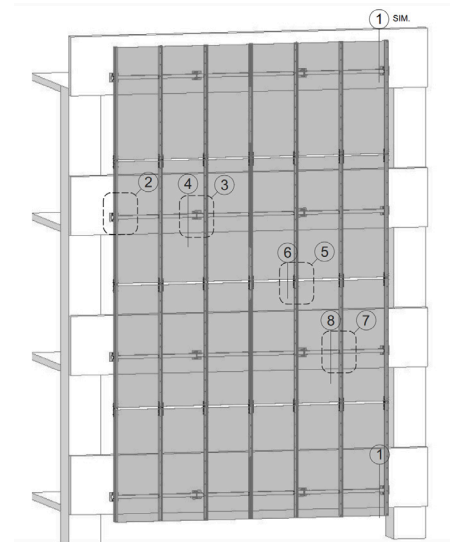
We've dialed in the custom process to allow you to specify the Parasoleil system early and develop the project over time to meet lead times, maintain project schedules and keep you involved through the entire process.

FULL TURN-KEY SYTEM

Parasoleil's standard pre-engineered substructure, the ParaClad™ system, is easily specifiable so all your needs are being supported and supplied by a single source to then be designed and manufactured for a seamless integration with your panel array. *Contact us for more information on the ParaClad™ system.*



PARACLAD™ 100 SERIES
Only verticle tubes

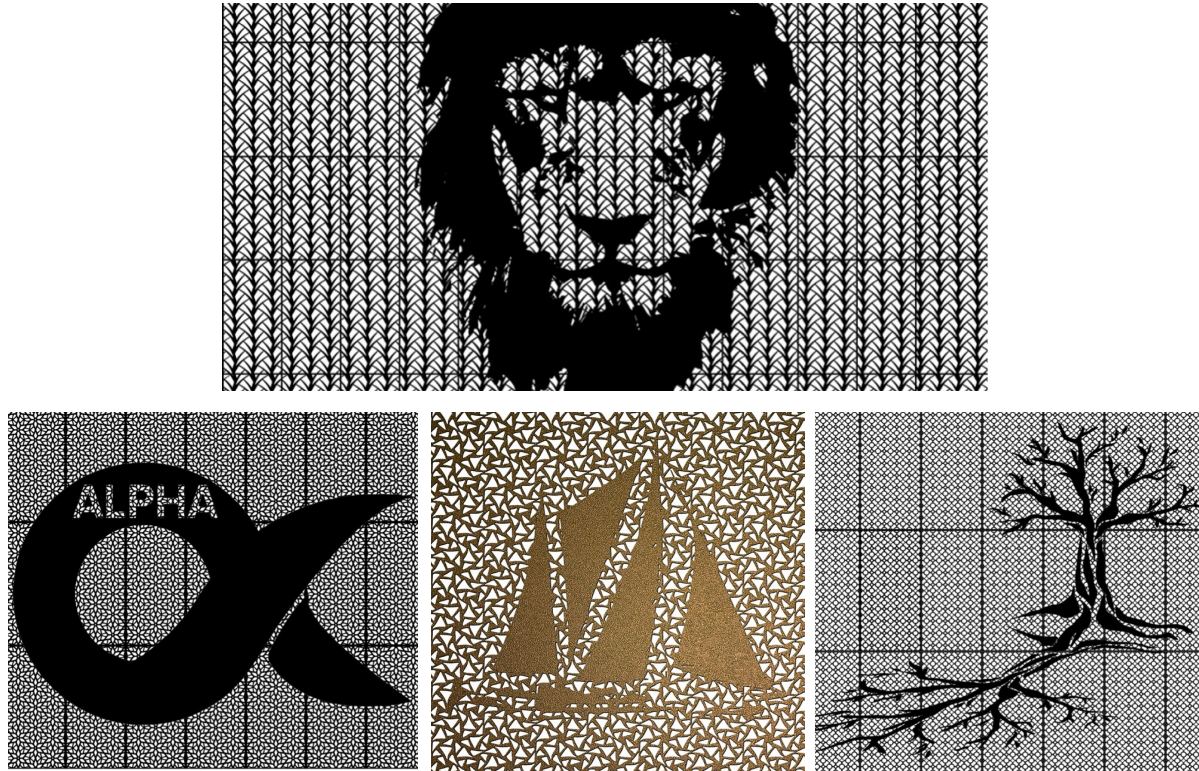


PARACLAD™ 200 SERIES
Includes verticle and horizontal tubes

Using MESH

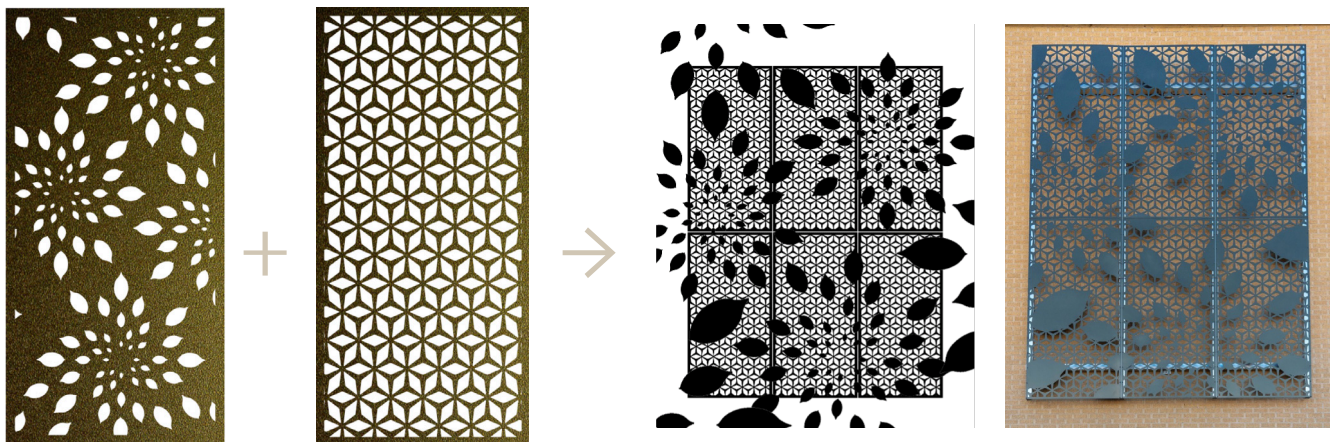
OVERLAYS

Take a graphic, image, text, or any macro-pattern and “overlay” that pattern onto the MESH pattern.



PATTERN INVERTS

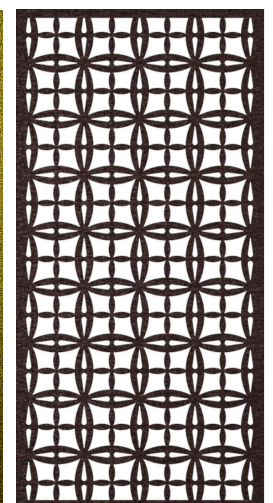
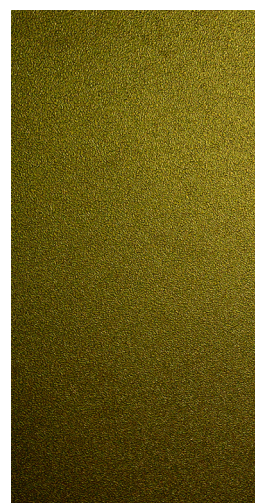
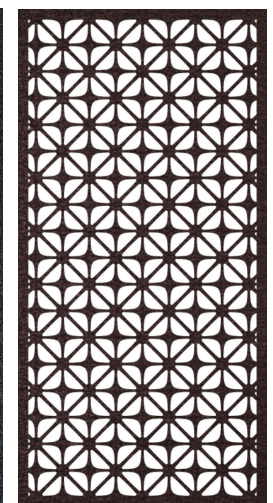
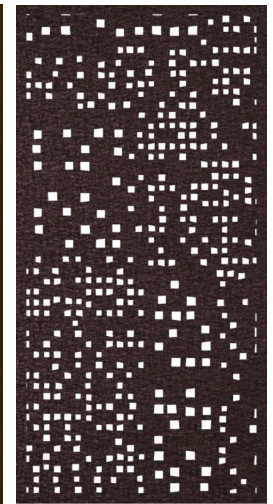
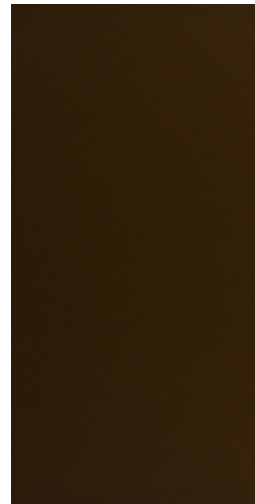
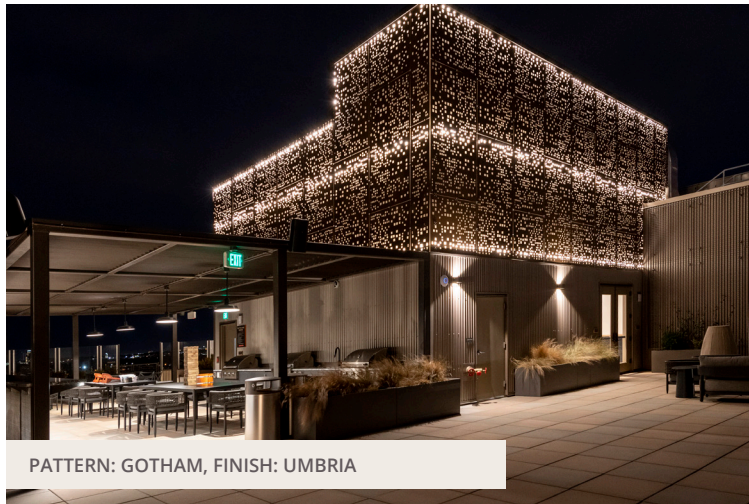
Take the inverse of one of our existing patterns so the cut outs become the solids, and lay that on top of MESH to highlight the contrast between geometric and continues.



Using MESH (cont.)

MESH PATTERN ONLY

Elevate your façade by upgrading your design from a simple perf panel to a MESH panel – adding the artistic element of unique shapes and movement without overwhelming the aesthetic.



Using MESH (cont.)

PROGRESSIVE

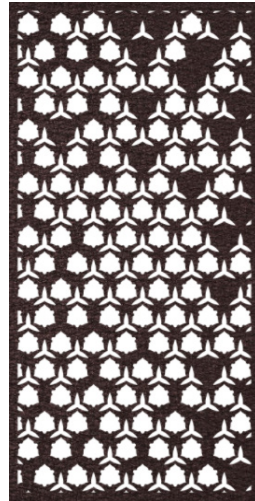
Customize the same pattern for different site requirements, but carry the design language across the property.



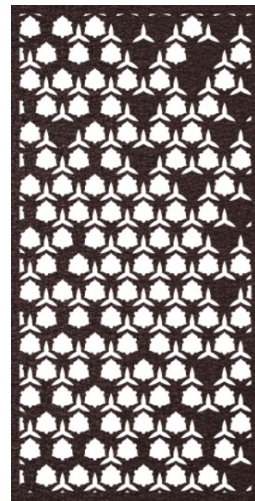
PATTERN: BOULDER FLOWER, FINISH: LIBERTY VERDIGRIS



PATTERN: APIARY, FINISH: INDUSTRY



PATTERN: APIARY, FINISH: LIBERTY VERDIGRIS



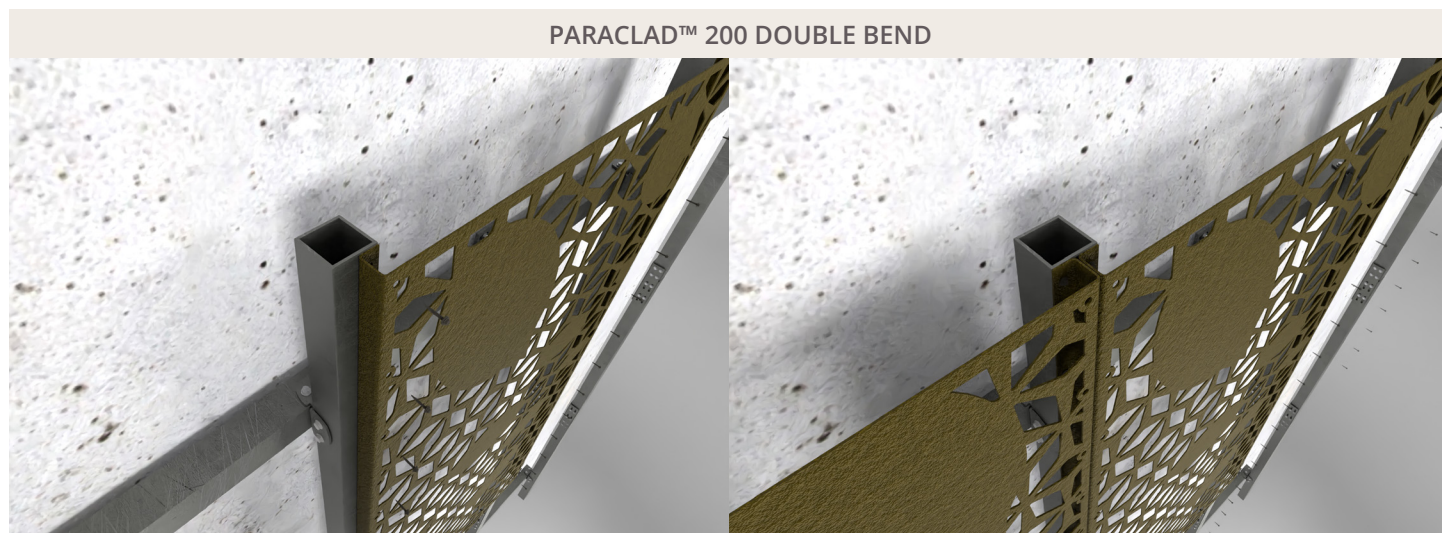
MESH Considerations

PATTERN OPENNESS

To maintain structural rigidity MESH patterns generally do not exceed 60% openness. As needed, Parasoleil can provide site specific engineering so you'll know exactly what is needed.

BORDERS

All panels will require a degree of solid edges. If the panels include the double bend feature, the visible border can be as small as approximately 0.5". In the case of flat panels with exposed fasteners, the recommended border width will be at least 1.5". This ensures sufficient material for fastening and also covers the entire width of the structural tube.



Getting Started with MESH

Call our expert sales team to discuss your project. If you have any sketches or drawings that represent your concepts, those can aid in expediting the estimating process.

The possibilities are endless when bringing this product indoors. Add the visual weight and gravitas of solid metal panels, the intricacy of precision laser cut patterns, and the texture of a Patina Powdercoat finish to accent any interior space.

STEP BY STEP GUIDE




- 1. Determine your vision**
 - What's the scope and scale of the array?
 - What's the primary content you want to "pop"?
- 2. Define site requirements and engineering considerations**
 - What is your design pressure?
 - What is the connection between structure and building?
- 3. Select your MESH "field" pattern**
 - Do you want a more organic or crystalline field pattern?
 - What opening percentage do you need?
- 4. Start to play with the "overlay"**
 - Is the overlay at the appropriate scale?
 - What panel size is ideal for panelization of the array?
- 5. Layout panel system on ParaClad™ substructure system**
 - Incorporate CSI Section 7 Spec
 - Reference ParaClad™ Design Guide for specification support

Contact Parasoleil for complete specifications, installation requirements and warranty coverage.

All Parasoleil patterns are protected under copyright law. Copying, modifying, or any unauthorized use of these patterns is strictly prohibited.

We look forward to hearing from you.

6510 W. 91st Avenue, Suite 100
Westminster, CO 80031
Phone | (303) 327-9997
Email | hello@parasoleil.com
parasoleil.com

 /ParasoleilUSA
 /Parasoleil
 /ParasoleilUSA

Parasoleil