

PRODUCT DETAILS

PROJECT DETAILS

APPLICATION

cladding

MATERIAL

aluminum

PATTERN

Shattered©, custom

FINISH

Buffalo Dime™

parasoleil.com
303.589.4524
hello@parasoleil.com

SITUATION

The City of Washington, D.C. has been updating each of the 26 public libraries in the district to better meet to the needs of their respective community. In the Capitol View neighborhood, re-adoption of the library by the community played a primary role in the rejuvenation to the original 1965 building with a re-modeled interior and an updated exterior.

SOLUTION

With the aid of the community, funds were raised for an upgrade to the exterior of the building. This second phase of the project featured Parasoleil panels as a treatment to the masonry façade that modernizes the building and evokes a sense of pride for the residents of the community.

Parasoleil

From the Client

OWNER

DC Public Library

The biggest challenge in this project was having to stay flexible with changing scopes, phases, and budgets. DCPL worked closely with the creative team to guide the project to a successful completion for both the original interior renovation and the additional exterior renovation.

SPECIFIER

McGhee Associates

Parasoleil was able to provide the maximum square footage of panels on this project through standard offerings and sizes that both satisfied the design intent of the architect and met the aesthetic requirements of the community. The key to success was the broad spectrum of Parasoleil patterns for for community approval, and the economical use of material to clad the entire building within budget.

CONTRACTORS

Broughton Construction

Though the original design did not include Parasoleil, the Broughton team found Parasoleil as the option that allowed for more panels on the building respecting structural and engineering requirements. The economical decorative panel system dramatically upgraded the building without having to replace the existing masonry.

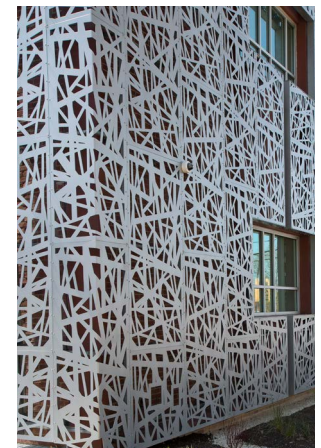
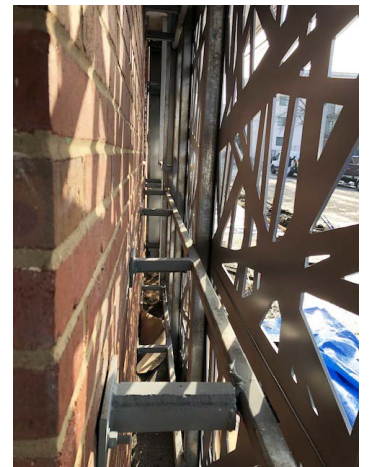
Parasoleil

PANEL

- 1/8" and 1/4" aluminum
- Cladding panels
- Panel labeling system for installation

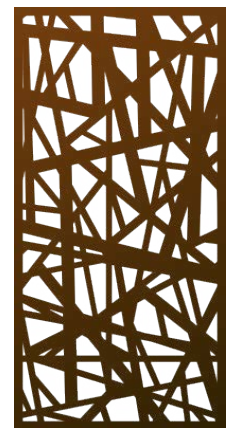
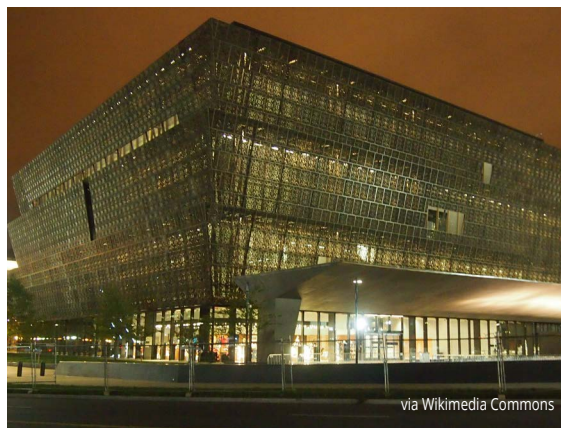
HARDWARE

- Direct mount PDH fasteners
- Custom finish



PANEL RADIUS

Due to the 1/4 inch material thickness, a slight radius on the outside face of the panels occurs. Reducing the radius too much in the press break process can split or crack the material.



PATTERN INSPIRATION

Inspired from the nearby National Museum of African American History and Culture, which is covered in cast aluminum panels, the idea of patterned panels with a geometric and modern feel was quickly adopted by the community and approved through a collective vote.

All Parasoleil finishes are warrantied for 10 years and all projects are backed by the Parasoleil brand. Patterns and hardware are protected under copyright and patent law, respectively.