

PARASOLEIL CASE STUDY

Shiwi Ts'ana Elementary School

ZUNI, NEW MEXICO

Completed April 2016



PRODUCT DETAILS

APPLICATION

shade

MATERIAL

aluminum

PATTERN

Quiet Wood©

FINISH

Copper Foil™

parasoleil.com
303.589.4524
hello@parasoleil.com



PROJECT DETAILS

SITUATION

Shiwi Ts'ana Elementary School faced a unique challenge of combining two older schools into one, while improving facilities, promoting sustainability, and protecting the local cultural heritage of the Zuni Tribe.

SOLUTION

The school's entrance faces the majestic view of Dowa Yalanne, a culturally and historically significant mountain in Zuni. It was important to capture as much of this natural monument indoors as it was to provide a natural and culturally appropriate exterior. Parasoleil partnered with the architect to develop a shade system as an architectural element that filters sunlight and casts shadows similar to those of trees in a forest. The combination of materials, pattern, and finish ensured a durable, yet natural solution to providing shade around the glass entrance of the building.

Parasoleil

From the Client

OWNER

Shiwi Ts'ana Elem. School

A well designed building benefits from a clearly marked point of arrival, and Parasoleil's decorative panels were instrumental in defining that point of egress.

SPECIFIER

Dekker/Perich/Sabatini Architects

In the heat of western New Mexico, every project must consider how to handle solar heat gain. Parasoleil provided a truly artful way to do that for this large glass atrium.

CONTRACTOR

Southwest Glass

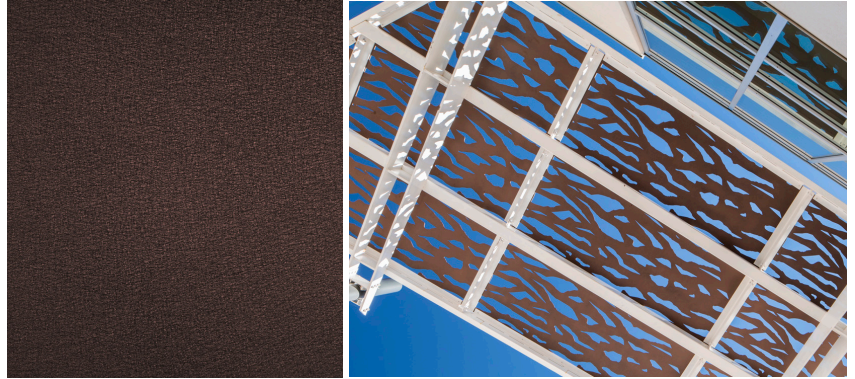
With modular, rectangular panel sizes and a simple direct mount fastening method, these panels installed as easily as plywood on a stick-framed house.

PANEL

- 1/4" aluminum with minimal deflection at 48" spans

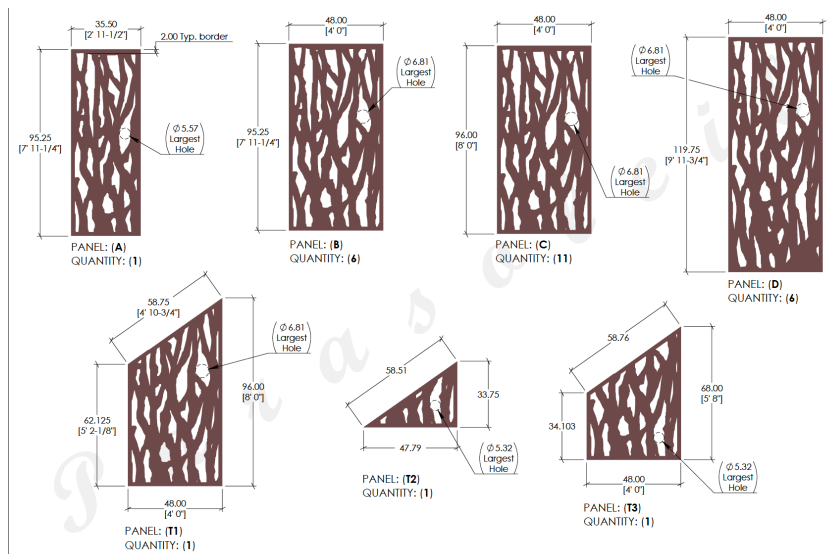
HARDWARE

- Direct mount PDH with bi-metal coating and corrosion resistance



SUN EXPOSURE

The Copper Foil™ powdercoat finish was selected for its robust UV resistance capabilities which reduces the degree of color fade over time.



EASY INSTALL WITH MODULAR PANELS

The entire installation was made up of seven different panel types, creating a set of 27 modular panels, making the installation process straightforward and easy for the contractor team.

Parasoleil

All Parasoleil finishes are warrantied for 10 years and all projects are backed by the Parasoleil brand. Patterns and hardware are protected under copyright and patent law, respectively.